

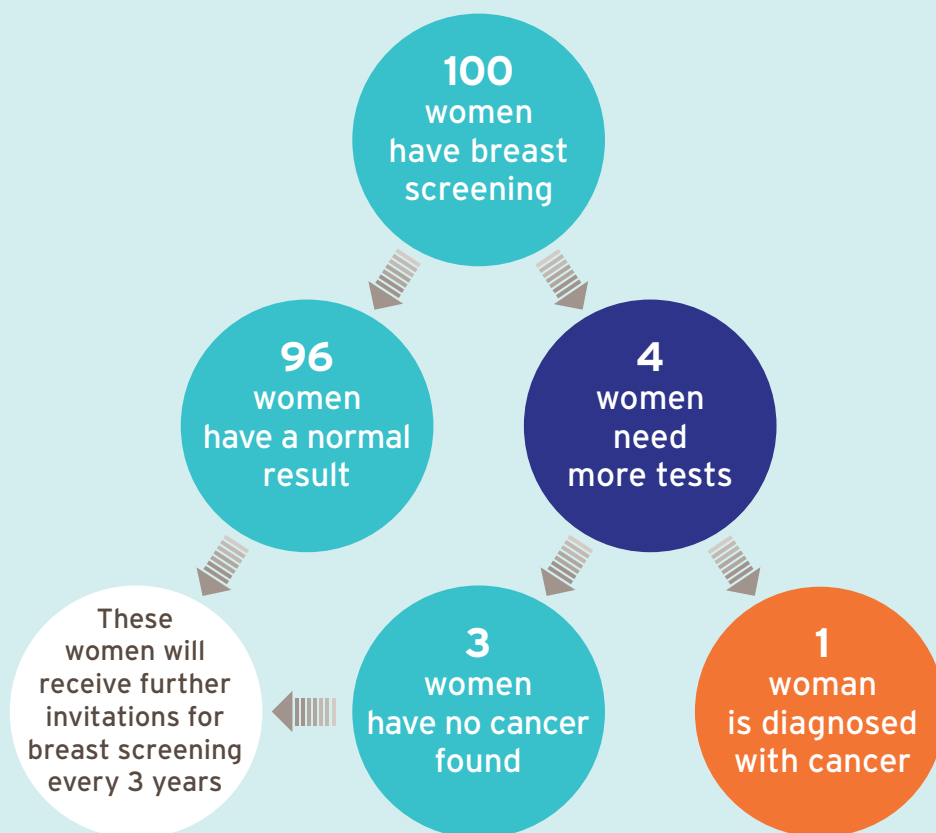
# Breast screening

## Why have I been called back?



*Breast*  *Screening*

What happens to 100 women  
**each time** they have breast screening?



## What happens at a breast assessment clinic?

The reason you were invited to attend will be explained to you when you come to the clinic. You will also be asked about any breast problems and given a chance to ask questions.

A number of tests may be carried out but you may not need all of them. The tests include:

- an examination of your breasts by a doctor;
- more mammograms (breast X-rays) showing different views of your breast;
- ultrasound – a painless scan which shows a picture of the tissues within the breast;
- a biopsy – a small sample of breast tissue may be taken with a needle to be checked under a microscope. This is carried out under local anaesthetic which numbs the area;
- fine needle test – a few cells may be removed from your breast with a very fine needle and examined under a microscope. This test is similar to having blood taken.



### **How long will the visit take?**

Please be prepared to spend at least 2 hours at the clinic; although this is not always necessary.

### **Can I bring someone with me?**

Yes, you may find it helpful to bring someone such as a partner, a relative or a friend along with you.

### **When do I get my results?**

This depends on the tests that you need. You will either be told your results before you leave the clinic or, if you need a biopsy, you will be asked to return within a week for the results.

### **What if I am told I have breast cancer?**

You will be cared for by a specialist breast cancer team. They will talk to you about your diagnosis and your treatment options.

### **Who can I talk to if I have any further questions?**

Please contact the breast care nurse if you have further questions or concerns. Her contact details are in your letter.

### **What if I have to change my appointment?**

Please phone your local screening centre to make a new appointment.

## Screening centres

### **Belfast Health and Social Care Trust**

(also covering South Eastern HSC Trust)

The Screening Centre  
12-22 Linenhall Street, Belfast BT2 8BS  
Tel: 028 9033 3700

### **Northern Health and Social Care Trust**

Northern Area Breast Screening and  
Assessment Unit

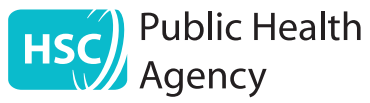
Level A, Antrim Area Hospital  
45 Bush Road, Antrim BT41 2RL  
Tel: 028 9442 4425

### **Southern Health and Social Care Trust**

The Breast Screening Unit  
Flat F, The Maples  
Craigavon Area Hospital  
Lurgan Road, Portadown BT63 5QQ  
Tel: 028 3839 7020

### **Western Health and Social Care Trust**

The Breast Screening Unit  
Ground Floor, The Nurses' Home  
Altnagelvin Area Hospital  
Glenshane Road, Londonderry BT47 6SB  
Tel: 028 7161 1443



**Public Health Agency**  
12–22 Linenhall Street, Belfast BT2 8BS.  
Tel: 0300 555 0114 (local rate).  
[www.publichealth.hscni.net](http://www.publichealth.hscni.net)  
[www.cancerscreening.hscni.net](http://www.cancerscreening.hscni.net)  
[www.becancerawareni.info/breast-cancer](http://www.becancerawareni.info/breast-cancer)

Find us on:

